

# MOSFET – N 沟道, POWERTRENCH®

150 V, 130 A, 7.5 mΩ

## FDP075N15A, FDB075N15A

### 说明

此 N 沟道 MOSFET 采用 onsemi 先进 POWERTRENCH 工艺生产，这一先进工艺是专为最大限度地降低导通电阻并保持卓越开关性能而定制的。

### 特性

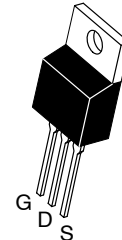
- $R_{DS(on)} = 6.25 \text{ m}\Omega$  (典型值) @  $V_{GS} = 10 \text{ V}$ ,  $I_D = 100 \text{ A}$
- 快速开关
- 低栅极电荷
- 高性能沟道技术可实现极低的  $R_{DS(on)}$
- 高功率和高电流处理能力
- 符合 RoHS 标准

### 应用

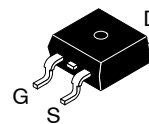
- 用于 ATX / 服务器 / 电信 PSU 的同步整流
- 电池保护电路
- 电机驱动和不间断电源
- 微型太阳能逆变器

$V_{DSS}$	$R_{DS(on)}$ MAX	$I_D$ MAX
150 V	7.5 mΩ @ 10 V	130 A

\*封装限制电流为 120 A。

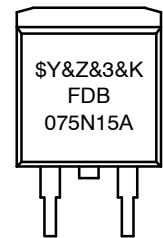
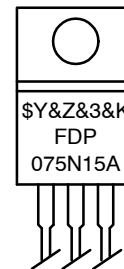


TO-220  
CASE 221A-09

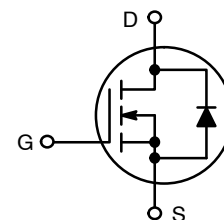


D<sup>2</sup>PAK-3 (TO-263, 3-LEAD)  
CASE 418AJ

### MARKING DIAGRAM



\$Y = onsemi logo  
FDP075N15A = Device Code  
FDB075N15A  
&Z = Assembly Plant Code  
&3 = 3-Digit Date Code Format  
&K = 2-Digits Lot Run Traceability Code



N-Channel

### ORDERING INFORMATION

See detailed ordering and shipping information on page 9 of this data sheet.

# FDP075N15A, FDB075N15A

MOSFET 最大额定值 ( $T_C = 25^\circ\text{C}$  除非另有说明。)

符号	参数	FDP075N15A-F102 FDB075N15A	单位
$V_{DSS}$	漏极-源极电压	150	V
$V_{GSS}$	栅极-源极电压	$\pm 20$	V
$I_D$	漏极电流	- 连续 ( $T_C = 25^\circ\text{C}$ )	130*
		- 连续 ( $T_C = 100^\circ\text{C}$ )	92
$I_{DM}$	漏极电流	- 脉冲 (说明 1)	522
$E_{AS}$	单脉冲雪崩能量 (说明 2)	588	mJ
$dv/dt$	二极管恢复 $dv/dt$ 峰值 (说明 3)	6.0	V/ns
$P_D$	功耗	( $T_C = 25^\circ\text{C}$ )	333
		- 降低至 $25^\circ\text{C}$ 以上	2.22
$T_J, T_{STG}$	工作和存储温度范围	-55 至 +175	$^\circ\text{C}$
$T_L$	用于焊接的最大引线温度, 距离外壳 1/8", 持续 5 秒	300	$^\circ\text{C}$

Stresses exceeding those listed in the Maximum Ratings table may damage the device. If any of these limits are exceeded, device functionality should not be assumed, damage may occur and reliability may be affected.

(参考译文)

如果电压超过最大额定值表中列出的值范围, 器件可能会损坏。如果超过任何这些限值, 将无法保证器件功能, 可能会导致器件损坏, 影响可靠性。

\*封装限制电流为 120 A。

1. 重复额定值: 脉冲宽度受限于最大结温。

2. 开始  $T_J = 25^\circ\text{C}$ ,  $L = 3\text{ mH}$ ,  $I_{AS} = 19.8\text{ A}$ 。

3.  $I_{SD} \leq 100\text{ A}$ ,  $di/dt \leq 200\text{ A}/\mu\text{s}$ ,  $V_{DD} \leq BV_{DSS}$ , 开始  $T_J = 25^\circ\text{C}$ 。

## 热性能

符号	参数	FDP075N15A-F102 FDB075N15A	单位
$R_{\theta JC}$	结至外壳热阻最大值	0.45	$^\circ\text{C}/\text{W}$
$R_{\theta JA}$	结至环境热阻 (最小尺寸的 2 盎司焊盘) 最大值。	62.5	
	结至环境热阻 D2-PAK (1 in <sup>2</sup> 2 盎司焊盘) 最大值。	40	

# FDP075N15A, FDB075N15A

## ELECTRICAL CHARACTERISTICS (T<sub>C</sub> = 25°C unless otherwise noted)

符号	参数	测试条件	最小值	典型值	最大值	单位
<b>关断特性</b>						
BV <sub>DSS</sub>	漏极-源极击穿电压	I <sub>D</sub> = 250 μA, V <sub>GS</sub> = 0 V	150	-	-	V
ΔBV <sub>DSS</sub> / ΔT <sub>J</sub>	击穿电压温度系数	I <sub>D</sub> = 250 μA, 温度参考 25°C	-	0.1	-	V/°C
I <sub>DSS</sub>	零栅极电压漏极电流	V <sub>DS</sub> = 120 V, V <sub>GS</sub> = 0 V	-	-	1	μA
		V <sub>DS</sub> = 120 V, T <sub>C</sub> = 150°C	-	-	500	
I <sub>GSS</sub>	栅极-体漏电流	V <sub>GS</sub> = ±20 V, V <sub>DS</sub> = 0 V	-	-	±100	nA
<b>导通特性</b>						
V <sub>GS(th)</sub>	栅极阈值电压	V <sub>GS</sub> = V <sub>DS</sub> , I <sub>D</sub> = 250 μA	2.0	-	4.0	V
R <sub>DS(on)</sub>	漏极至源极静态导通电阻	V <sub>GS</sub> = 10 V, I <sub>D</sub> = 100 A	-	6.25	7.5	mΩ
g <sub>FS</sub>	正向跨导	V <sub>DS</sub> = 10 V, I <sub>D</sub> = 100 A	-	164	-	S
<b>动态特性</b>						
C <sub>iss</sub>	输入电容	V <sub>DS</sub> = 75 V, V <sub>GS</sub> = 0 V, f = 1 MHz	-	5525	7350	pF
C <sub>oss</sub>	输出电容		-	516	685	pF
C <sub>rss</sub>	反向传输电容		-	21	-	pF
C <sub>oss(er)</sub>	能量相关输出电容	V <sub>DS</sub> = 75 V, V <sub>GS</sub> = 0 V	-	909	-	pF
Q <sub>g(tot)</sub>	10 V 的栅极电荷总量	V <sub>DS</sub> = 75 V, I <sub>D</sub> = 100 A, V <sub>GS</sub> = 10 V (说明 4)	-	77	100	nC
Q <sub>gs</sub>	栅极-源极栅极电荷		-	26	-	nC
Q <sub>gs2</sub>	栅极平台电荷阈值		-	11	-	nC
Q <sub>gd</sub>	栅极-漏极“米勒”电荷		-	16	-	nC
ESR	等效串联电阻 (G-S)	f = 1 MHz	-	2.29	-	Ω
<b>开关特性</b>						
t <sub>d(on)</sub>	导通延迟时间	V <sub>DD</sub> = 75 V, I <sub>D</sub> = 100 A, V <sub>GS</sub> = 10 V, R <sub>G</sub> = 4.7 Ω (说明 4)	-	28	66	ns
t <sub>r</sub>	开通上升时间		-	37	84	ns
t <sub>d(off)</sub>	关断延迟时间		-	62	134	ns
t <sub>f</sub>	关断下降时间		-	21	52	ns
<b>漏极-源极二极管特性</b>						
I <sub>S</sub>	漏极-源极二极管最大正向连续电流		-	-	130*	A
I <sub>SM</sub>	漏极-源极二极管最大正向脉冲电流		-	-	520	A
V <sub>SD</sub>	漏极-源极二极管正向电压	V <sub>GS</sub> = 0 V, I <sub>SD</sub> = 100 A	-	-	1.25	V
t <sub>rr</sub>	反向恢复时间	V <sub>GS</sub> = 0 V, V <sub>DD</sub> = 75 V, I <sub>SD</sub> = 100 A, dI <sub>F</sub> /dt = 100 A/μs	-	97	-	ns
Q <sub>rr</sub>	反向恢复电荷		-	264	-	nC

4. 本质上独立于工作温度的典型特性。

典型性能特征

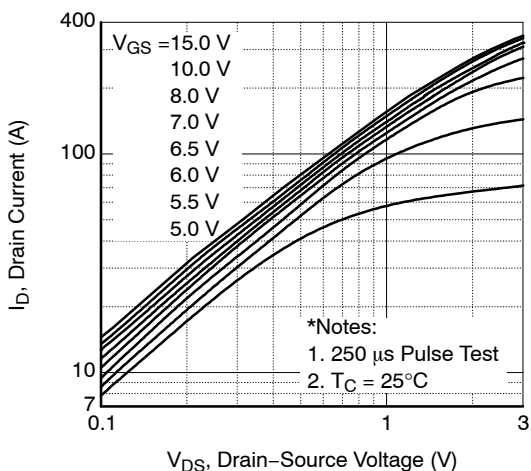


图 1. 导通区域特性

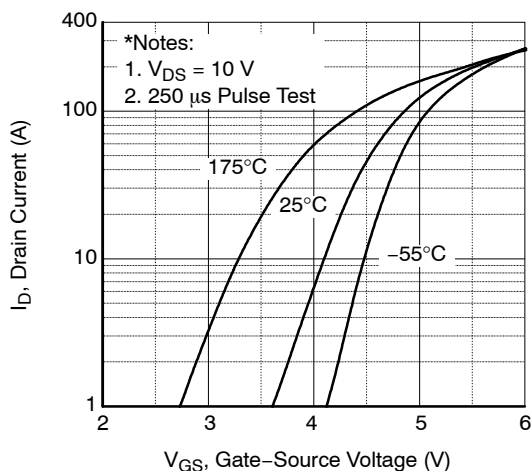


图 2. 传输特性

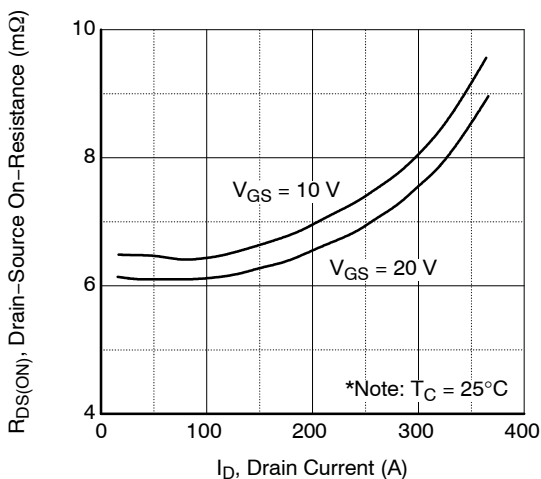


图 3. 导通电阻变化与漏极电流和栅极电压

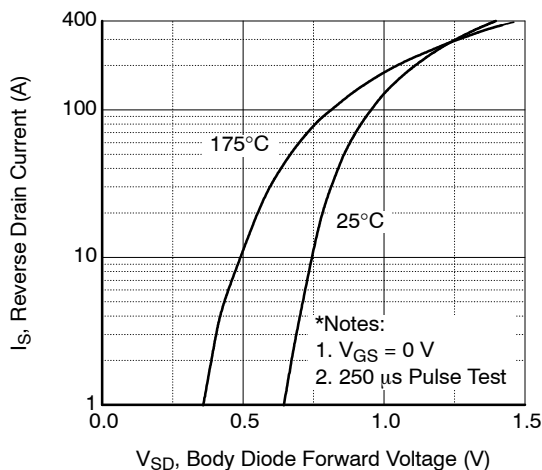


图 4. 体二极管正向电压变化与源极电流和温度

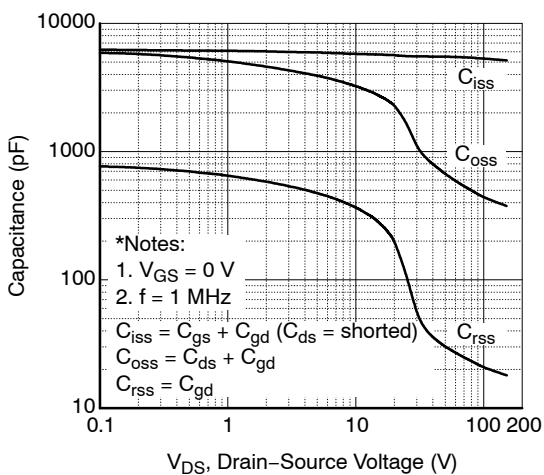


图 5. 电容特性

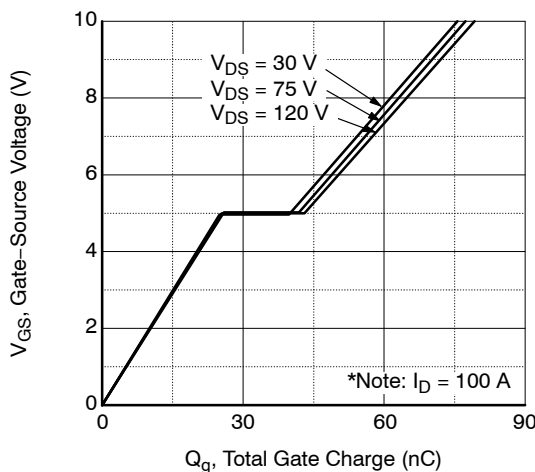


图 6. 栅极电荷

# FDP075N15A, FDB075N15A

## 典型性能特征 (接上页)

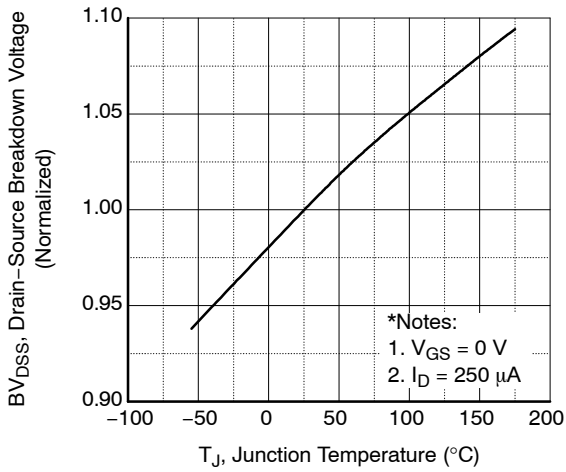


图 7. 击穿电压变化与温度

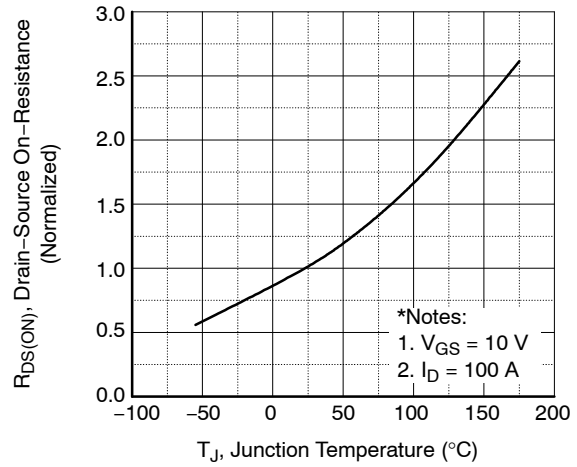


图 8. 导通电阻变化与温度

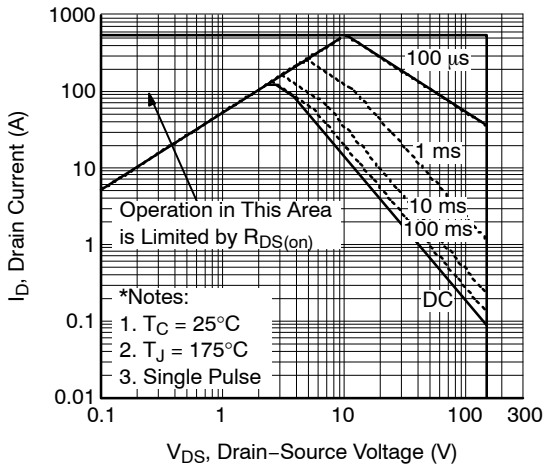


图 9. 最大安全工作区

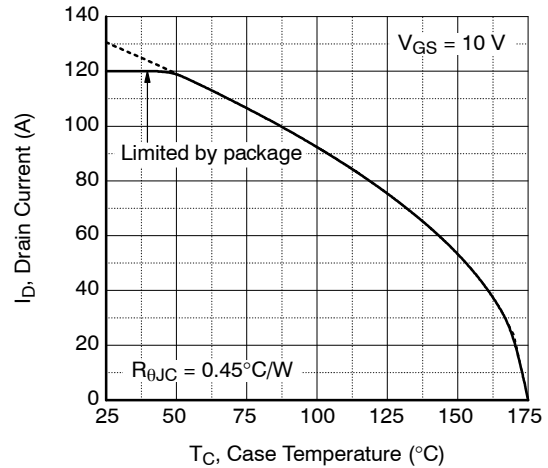


图 10. 最大漏极电流与外壳温度

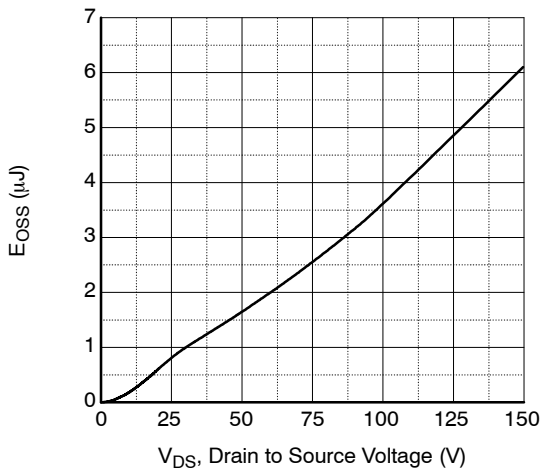


图 11. 输出电容 (E<sub>oss</sub>) 与漏极 - 源极电

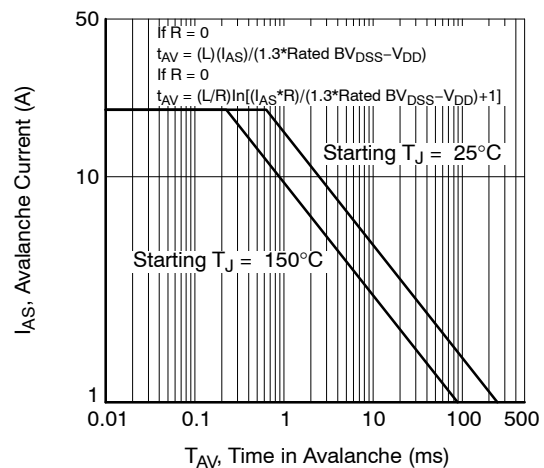


图 12. 非箝位电感开关能力

# FDP075N15A, FDB075N15A

## 典型性能特征 (接上页)

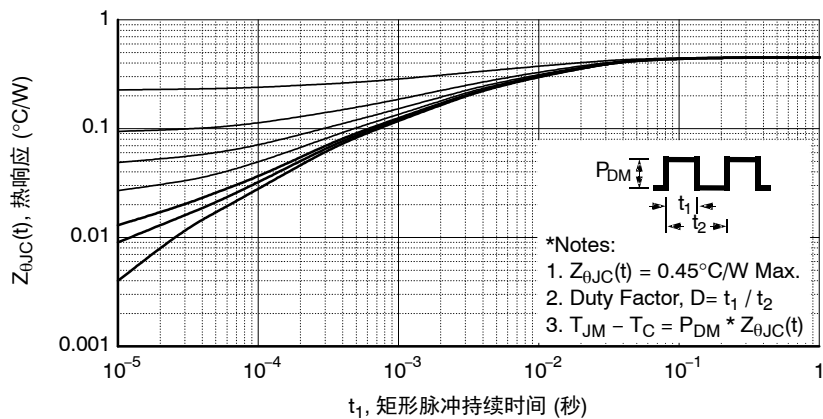


图 13. 瞬态热响应曲线

# FDP075N15A, FDB075N15A

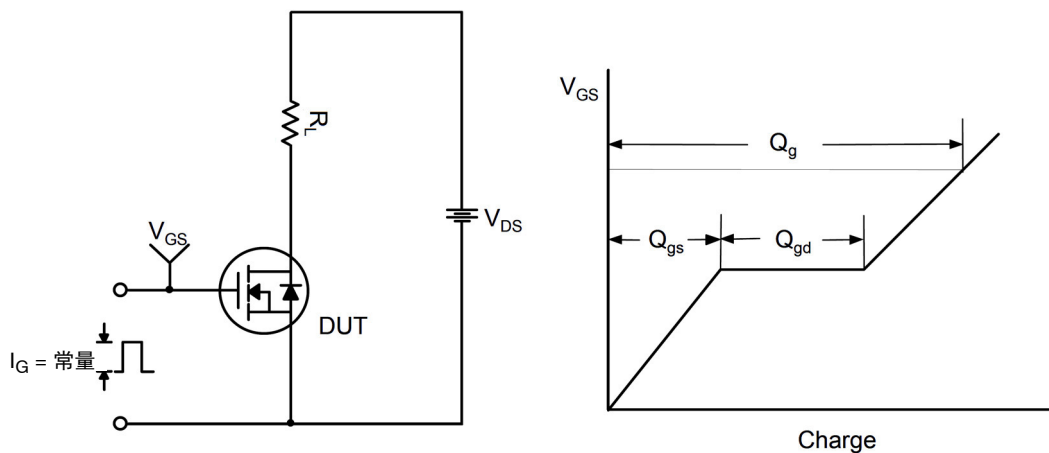


图 14. 栅极电荷测试电路与波形

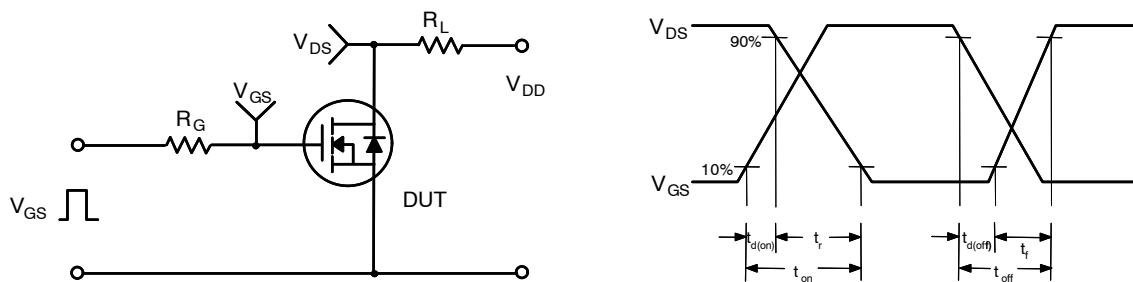


图 15. 阻性开关测试电路与波形

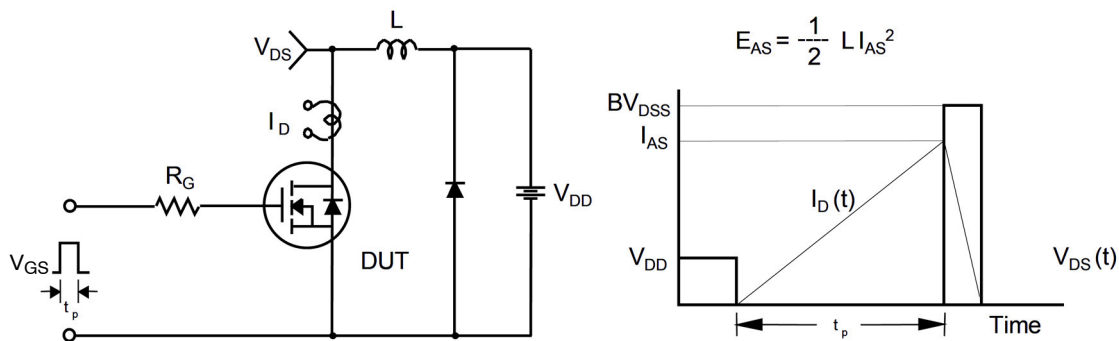


图 16. 非箝位电感开关测试电路与波形

# FDP075N15A, FDB075N15A

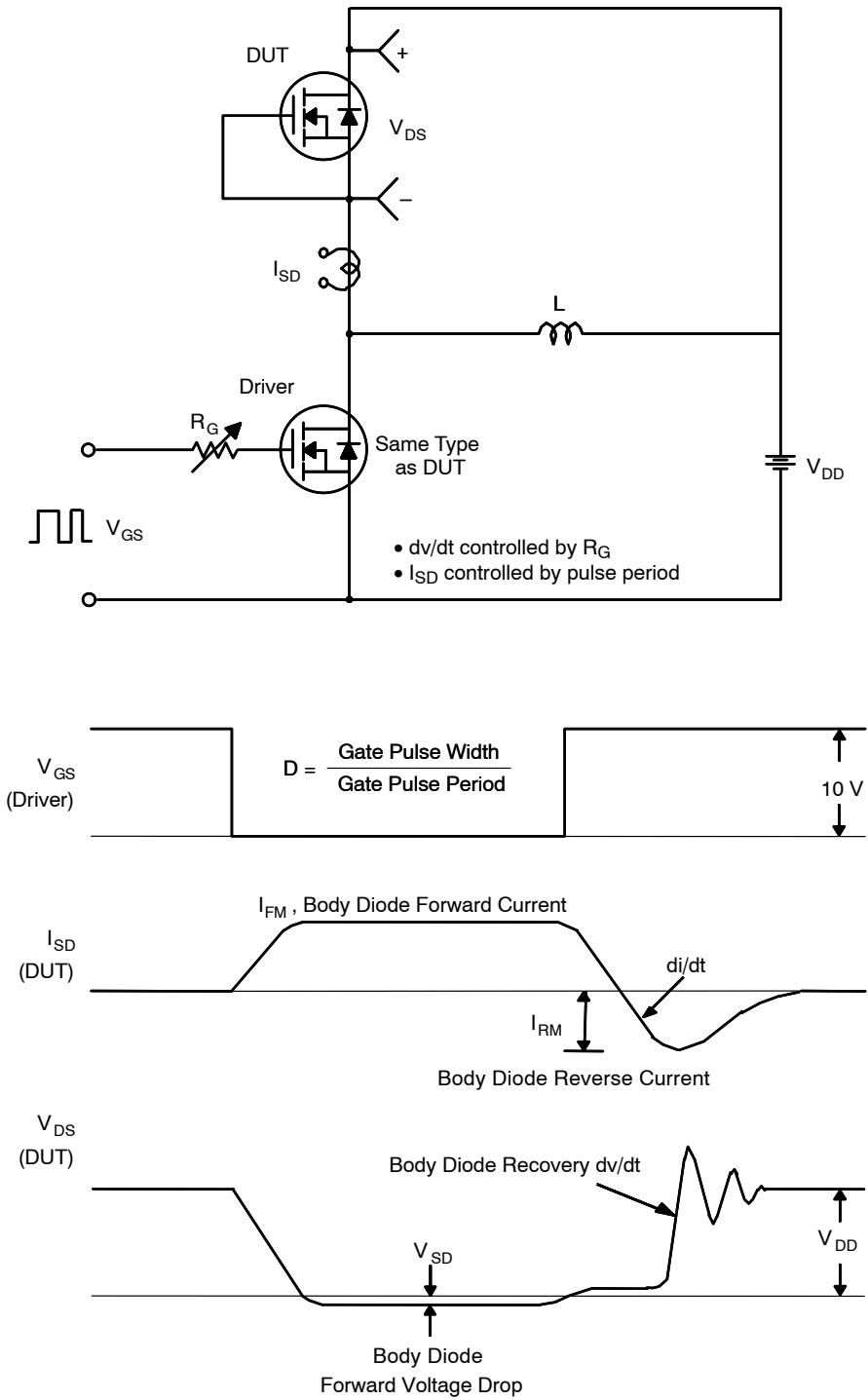


图 17. 二极管恢复  $dv/dt$  峰值测试电路与波形



## FDP075N15A, FDB075N15A

### 封装标识与订购信息

器件编号	顶标	封装	包装方法†	卷尺寸	带宽	数量
FDP075N15A-F102	FDP075N15A	TO-220	塑料管	不适用	不适用	50 个
FDB075N15A	FDB075N15A	D <sup>2</sup> -PAK	卷带	330 mm	24 mm	800 个

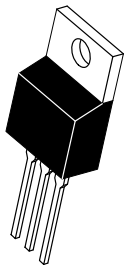
†For information on tape and reel specifications, including part orientation and tape sizes, please refer to our Tape and Reel Packaging Specifications Brochure, BRD8011/D.

POWERTRENCH is registered trademark of Semiconductor Components Industries, LLC dba "onsemi" or its affiliates and/or subsidiaries in the United States and/or other countries.

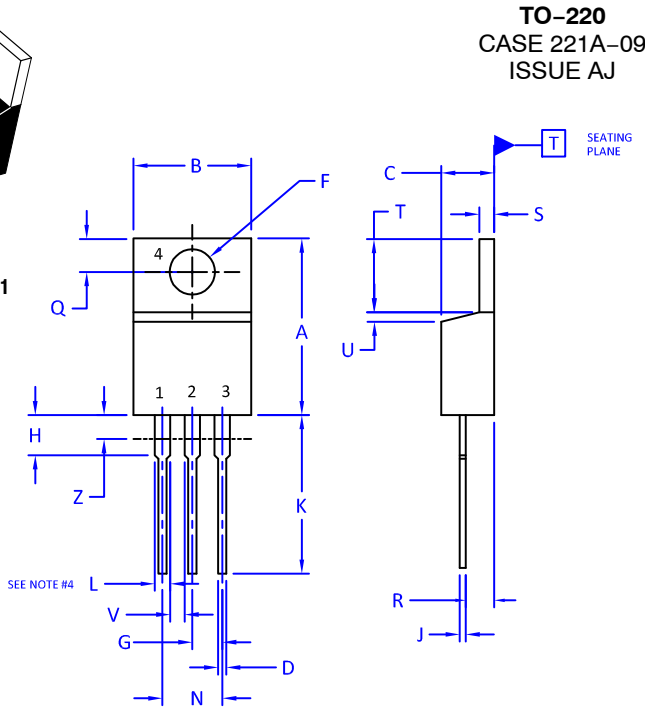
# MECHANICAL CASE OUTLINE

## PACKAGE DIMENSIONS

ON Semiconductor®



SCALE 1:1



TO-220  
CASE 221A-09  
ISSUE AJ

DATE 05 NOV 2019

NOTES:

1. DIMENSIONING AND TOLERANCING PER ANSI Y14.5M, 2009.
2. CONTROLLING DIMENSION: INCHES
3. DIMENSION Z DEFINES A ZONE WHERE ALL BODY AND LEAD IRREGULARITIES ARE ALLOWED.
4. MAX WIDTH FOR F102 DEVICE = 1.35MM

DIM	INCHES		MILLIMETERS	
	MIN.	MAX.	MIN.	MAX.
A	0.570	0.620	14.48	15.75
B	0.380	0.415	9.66	10.53
C	0.160	0.190	4.07	4.83
D	0.025	0.038	0.64	0.96
F	0.142	0.161	3.60	4.09
G	0.095	0.105	2.42	2.66
H	0.110	0.161	2.80	4.10
J	0.014	0.024	0.36	0.61
K	0.500	0.562	12.70	14.27
L	0.045	0.060	1.15	1.52
N	0.190	0.210	4.83	5.33
Q	0.100	0.120	2.54	3.04
R	0.080	0.110	2.04	2.79
S	0.045	0.055	1.15	1.41
T	0.235	0.255	5.97	6.47
U	0.000	0.050	0.00	1.27
V	0.045	---	1.15	---
Z	---	0.080	---	2.04

STYLE 1:

- PIN 1. BASE
- 2. COLLECTOR
- 3. EMITTER
- 4. COLLECTOR

STYLE 2:

- PIN 1. BASE
- 2. EMITTER
- 3. COLLECTOR
- 4. EMITTER

STYLE 3:

- PIN 1. CATHODE
- 2. ANODE
- 3. GATE
- 4. ANODE

STYLE 4:

- PIN 1. MAIN TERMINAL 1
- 2. MAIN TERMINAL 2
- 3. GATE
- 4. MAIN TERMINAL 2

STYLE 5:

- PIN 1. GATE
- 2. DRAIN
- 3. SOURCE
- 4. DRAIN

STYLE 6:

- PIN 1. ANODE
- 2. CATHODE
- 3. ANODE
- 4. CATHODE

STYLE 7:

- PIN 1. CATHODE
- 2. ANODE
- 3. CATHODE
- 4. ANODE

STYLE 8:

- PIN 1. CATHODE
- 2. ANODE
- 3. EXTERNAL TRIP/DELAY
- 4. ANODE

STYLE 9:

- PIN 1. GATE
- 2. COLLECTOR
- 3. EMITTER
- 4. COLLECTOR

STYLE 10:

- PIN 1. GATE
- 2. SOURCE
- 3. DRAIN
- 4. SOURCE

STYLE 11:

- PIN 1. DRAIN
- 2. SOURCE
- 3. GATE
- 4. SOURCE

STYLE 12:

- PIN 1. MAIN TERMINAL 1
- 2. MAIN TERMINAL 2
- 3. GATE
- 4. NOT CONNECTED

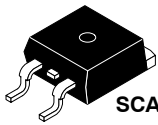
<b>DOCUMENT NUMBER:</b>	<b>98ASB42148B</b>	Electronic versions are uncontrolled except when accessed directly from the Document Repository. Printed versions are uncontrolled except when stamped "CONTROLLED COPY" in red.
<b>DESCRIPTION:</b>	<b>TO-220</b>	<b>PAGE 1 OF 1</b>

ON Semiconductor and are trademarks of Semiconductor Components Industries, LLC dba ON Semiconductor or its subsidiaries in the United States and/or other countries. ON Semiconductor reserves the right to make changes without further notice to any products herein. ON Semiconductor makes no warranty, representation or guarantee regarding the suitability of its products for any particular purpose, nor does ON Semiconductor assume any liability arising out of the application or use of any product or circuit, and specifically disclaims any and all liability, including without limitation special, consequential or incidental damages. ON Semiconductor does not convey any license under its patent rights nor the rights of others.

# MECHANICAL CASE OUTLINE

## PACKAGE DIMENSIONS

ON Semiconductor®



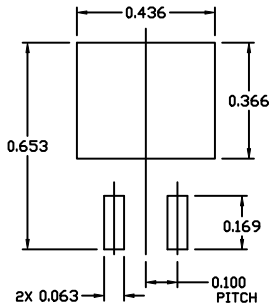
SCALE 1:1

### D<sup>2</sup>PAK-3 (TO-263, 3-LEAD)

#### CASE 418AJ

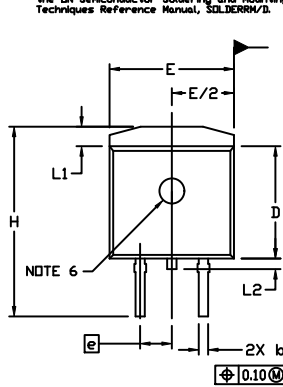
#### ISSUE F

DATE 11 MAR 2021



#### RECOMMENDED MOUNTING FOOTPRINT

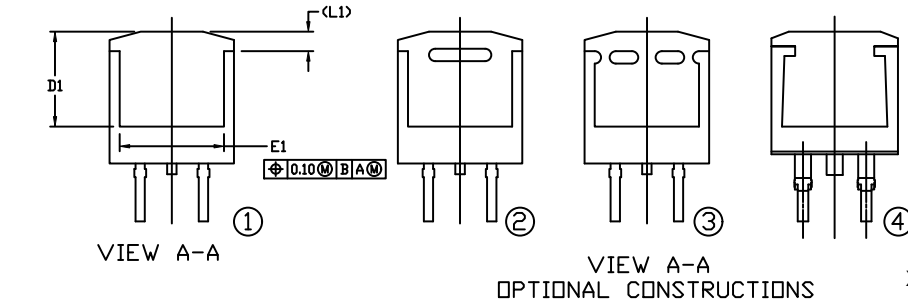
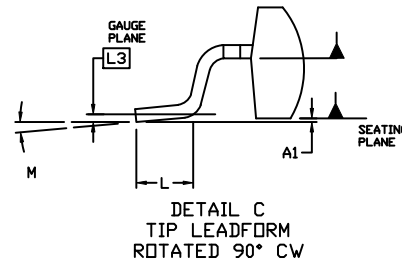
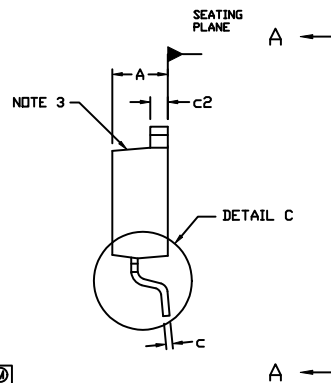
For additional information on our Pb-free strategy and soldering details, please download the ON Semiconductor Soldering and Mounting Techniques Reference Manual, SOLDERRM/D.



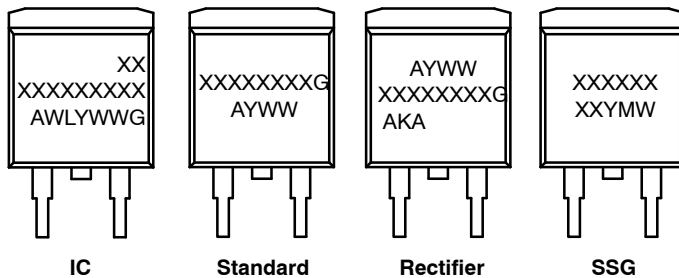
#### NOTES:

- DIMENSIONING AND TOLERANCING PER ASME Y14.5M, 2009.
- CONTROLLING DIMENSION: INCHES
- CHAMFER OPTIONAL.
- DIMENSIONS D AND E DO NOT INCLUDE MOLD FLASH. MOLD FLASH SHALL NOT EXCEED 0.005 PER SIDE. THESE DIMENSIONS ARE MEASURED AT THE OUTERMOST EXTREMES OF THE PLASTIC BODY AT DATUM H.
- THERMAL PAD CONTOUR IS OPTIONAL WITHIN DIMENSIONS E, L1, D1, AND E1.
- OPTIONAL MOLD FEATURE.
- ①, ② ... OPTIONAL CONSTRUCTION FEATURE CALL OUTS.

DIM	INCHES		MILLIMETERS	
	MIN.	MAX.	MIN.	MAX.
A	0.160	0.190	4.06	4.83
A1	0.000	0.010	0.00	0.25
b	0.020	0.039	0.51	0.99
c	0.012	0.029	0.30	0.74
c2	0.045	0.065	1.14	1.65
D	0.330	0.380	8.38	9.65
D1	0.260	---	6.60	---
E	0.380	0.420	9.65	10.67
E1	0.245	---	6.22	---
e	0.100	BSC	2.54	BSC
H	0.575	0.625	14.60	15.88
L	0.070	0.110	1.78	2.79
L1	---	0.066	---	1.68
L2	---	0.070	---	1.78
L3	0.010	BSC	0.25	BSC
M	0*	8*	0*	8*



#### GENERIC MARKING DIAGRAMS\*



- XXXXXX = Specific Device Code
- A = Assembly Location
- WL = Wafer Lot
- Y = Year
- WW = Work Week
- W = Week Code (SSG)
- M = Month Code (SSG)
- G = Pb-Free Package
- AKA = Polarity Indicator

\*This information is generic. Please refer to device data sheet for actual part marking. Pb-free indicator, "G" or microdot "▪", may or may not be present. Some products may not follow the Generic Marking.

<b>DOCUMENT NUMBER:</b>	<b>98AON56370E</b>	Electronic versions are uncontrolled except when accessed directly from the Document Repository. Printed versions are uncontrolled except when stamped "CONTROLLED COPY" in red.
<b>DESCRIPTION:</b>	<b>D<sup>2</sup>PAK-3 (TO-263, 3-LEAD)</b>	<b>PAGE 1 OF 1</b>

ON Semiconductor and ON are trademarks of Semiconductor Components Industries, LLC dba ON Semiconductor or its subsidiaries in the United States and/or other countries. ON Semiconductor reserves the right to make changes without further notice to any products herein. ON Semiconductor makes no warranty, representation or guarantee regarding the suitability of its products for any particular purpose, nor does ON Semiconductor assume any liability arising out of the application or use of any product or circuit, and specifically disclaims any and all liability, including without limitation special, consequential or incidental damages. ON Semiconductor does not convey any license under its patent rights nor the rights of others.

**onsemi**, **Onsemi**, and other names, marks, and brands are registered and/or common law trademarks of Semiconductor Components Industries, LLC dba "**onsemi**" or its affiliates and/or subsidiaries in the United States and/or other countries. **onsemi** owns the rights to a number of patents, trademarks, copyrights, trade secrets, and other intellectual property. A listing of **onsemi**'s product/patent coverage may be accessed at [www.onsemi.com/site/pdf/Patent-Marking.pdf](http://www.onsemi.com/site/pdf/Patent-Marking.pdf). **onsemi** reserves the right to make changes at any time to any products or information herein, without notice. The information herein is provided "as-is" and **onsemi** makes no warranty, representation or guarantee regarding the accuracy of the information, product features, availability, functionality, or suitability of its products for any particular purpose, nor does **onsemi** assume any liability arising out of the application or use of any product or circuit, and specifically disclaims any and all liability, including without limitation special, consequential or incidental damages. Buyer is responsible for its products and applications using **onsemi** products, including compliance with all laws, regulations and safety requirements or standards, regardless of any support or applications information provided by **onsemi**. "Typical" parameters which may be provided in **onsemi** data sheets and/or specifications can and do vary in different applications and actual performance may vary over time. All operating parameters, including "Typicals" must be validated for each customer application by customer's technical experts. **onsemi** does not convey any license under any of its intellectual property rights nor the rights of others. **onsemi** products are not designed, intended, or authorized for use as a critical component in life support systems or any FDA Class 3 medical devices or medical devices with a same or similar classification in a foreign jurisdiction or any devices intended for implantation in the human body. Should Buyer purchase or use **onsemi** products for any such unintended or unauthorized application, Buyer shall indemnify and hold **onsemi** and its officers, employees, subsidiaries, affiliates, and distributors harmless against all claims, costs, damages, and expenses, and reasonable attorney fees arising out of, directly or indirectly, any claim of personal injury or death associated with such unintended or unauthorized use, even if such claim alleges that **onsemi** was negligent regarding the design or manufacture of the part. **onsemi** is an Equal Opportunity/Affirmative Action Employer. This literature is subject to all applicable copyright laws and is not for resale in any manner.

## PUBLICATION ORDERING INFORMATION

### LITERATURE FULFILLMENT:

Email Requests to: [orderlit@onsemi.com](mailto:orderlit@onsemi.com)

**onsemi Website:** [www.onsemi.com](http://www.onsemi.com)

### TECHNICAL SUPPORT

**North American Technical Support:**  
Voice Mail: 1 800-282-9855 Toll Free USA/Canada  
Phone: 011 421 33 790 2910

**Europe, Middle East and Africa Technical Support:**

Phone: 00421 33 790 2910

For additional information, please contact your local Sales Representative